

Fuel Supply System

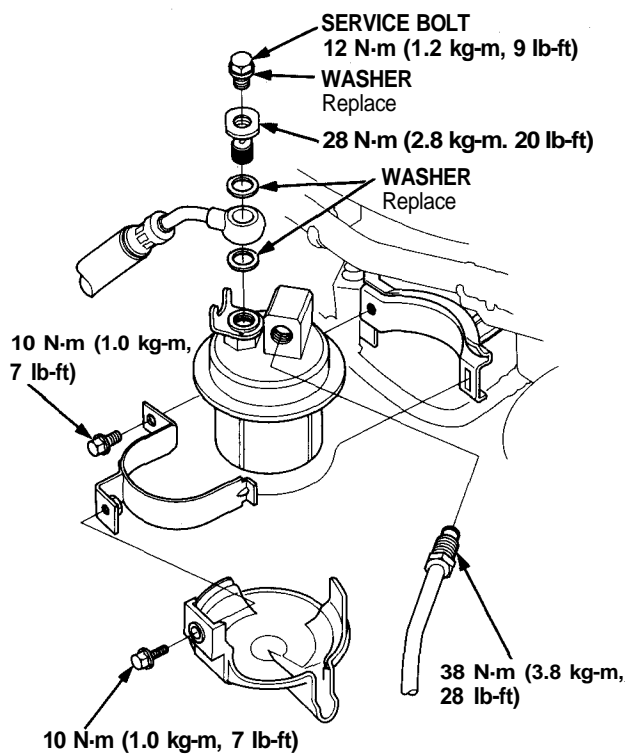
Fuel Filter

Replacement

⚠ WARNING Do not smoke while working on fuel system. Keep open flame away from your work area.

The filter should be replaced every 4 years or 60,000 miles (96,000 km), whichever comes first or whenever the fuel pressure drops below the specified value [310–360 kPa (3.1 – 3.6 kg/cm², 44–51 psi) (GS model), 270–320 kPa (2.7 – 3.2 kg/cm², 38–46 psi) (L, LS model) with the fuel pressure regulator vacuum hose disconnected and pinched] after making sure that the fuel pump and the fuel pressure regulator are OK.

1. Place a shop towel under and around the fuel filter.
2. Relieve fuel pressure (see page 11-106).
3. Remove the 12 mm banjo bolt and the fuel feed pipe from the filter.
4. Remove the fuel filter clamp and fuel filter.
5. When assembling, use new washers, as shown.



NOTE: Clean the flared joint of high pressure hoses thoroughly before reconnecting them.